

# Audylllic 'SmartWatch' Folder, V0.9.9.8 20 Jan 2026 rev11

Changelog since version 0.9.5 March 2024

0.9.5b July 2024 Account credit is displayed in bottom left corner of app window, app will not submit file with no credit available.

0.9.7 September 2 2024 - Option added to change API address in settings from <https://portal.audylllic.com/api> (cloud version) to local address <http://localhost:5080/api> (stand-alone private version) or any other private IP address.

Version 0.9.7.1. Upgraded network code to improve the logout function. Added an icon for the macOS version. Configured credits to display only when the API URL is audyllic.com. Introduced a "Resubmit Files with Errors" option in the Queue menu.

Version 0.9.7.2. Colour palette modified to Audyllic colours, ratified version numbering convention.

Version 0.9.8.0 Oct 21 2024. Added mp3 encoding for processed files, and support for stand-alone local hosting, support for multiple simultaneous instances with different configurations.

Version 0.9.9.0 December 17 2024. Added BS1770 loudness normalisation functions (based on pyloudnorm), and RMS normalisation, added noise reduction using DeepNetFilter and MobileNetV3 (using weights from <https://github.com/fschmid56/EfficientAT>), improved setup window layout.

Version 0.9.9.1 January 7 2025, Added "Show password" option on log in windows

Version 0.9.9.2 January 12 2025, Updates to file pre-processing notifications.

Version 0.9.9.3 January 14 2025, Delete output WAV file option added.

Version 0.9.9.4 January 15 2025, changes to WAV delete function for Video files.

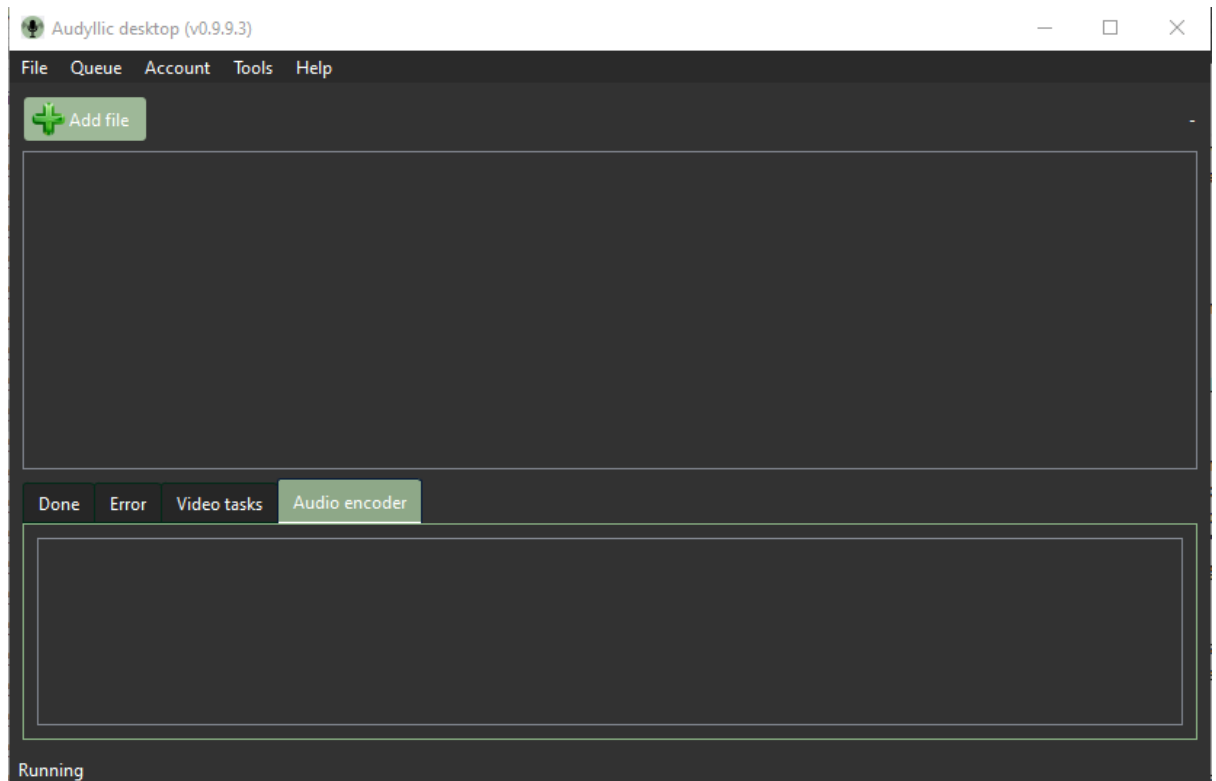
Version 0.9.9.6 July 16 2025, mono to dual mono/ stereo function added, added -19LUF post normalise.

Version 0.9.9.7 October 16 2025, Fixed an issue where non-WAV files ignored if noise reduction selected.

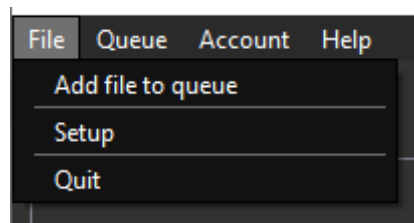
Version 0.9.9.8 January 20 2025, Post normalise audio only and video audio to a different levels

## Instructions –

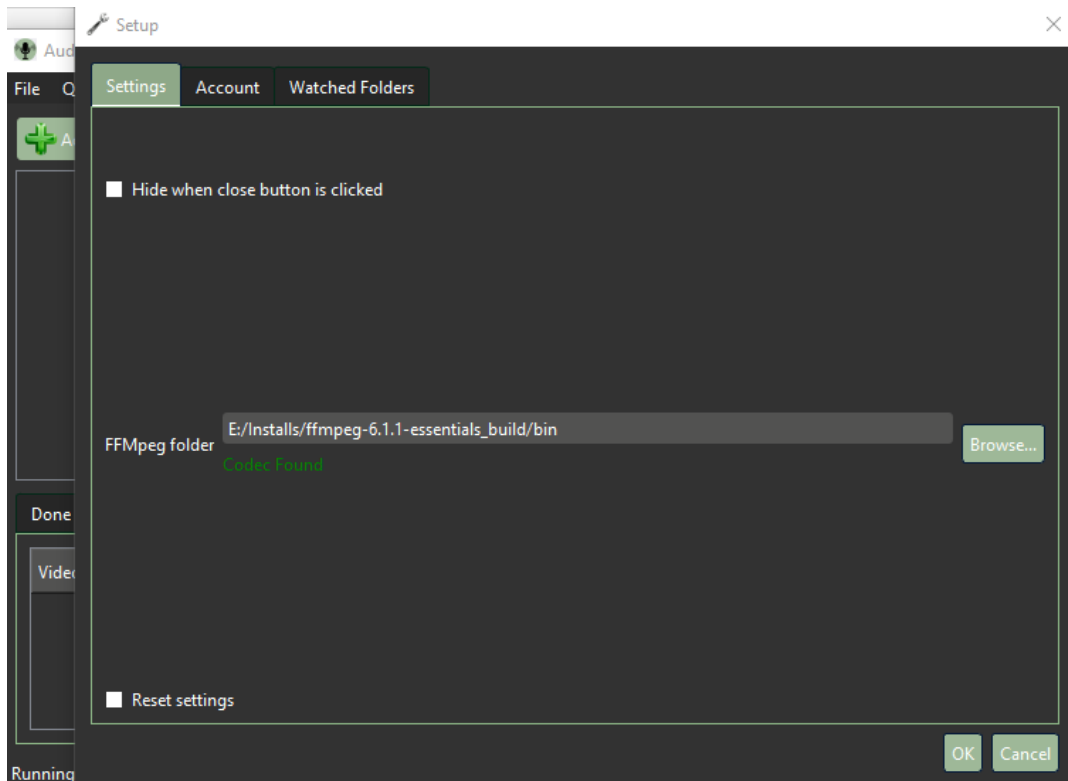
1. Download the ZIP file, (Windows version) save to somewhere on your PC where you can find it and extract the 'SmartWatch' Hot folder app for Windows from the downloads section of the Audyllic website. If required, create a shortcut to the "AudylllicDesktop.exe" file.
2. For the MacOS version, double click on the 'Audylllic.DMG' file , drag the 'Audylllic.app' to the applications folder. To run, open the Audyllic app.
3. If you have a previous version of 'Smartwatch, you can if required to tick the 'reset' option in 'File> Settings' and redefine your folders for watching and saving, and the preset or presets you require, if you do not, it will remember settings from previous installations.
4. Optionally, If audio processing of video files is required, download, save and extract the FFMPEG Windows package from <https://www.ffmpeg.org/download.html>
5. Open the file 'AudylllicDesktop.exe' after it opens, you should see the following window:




6. Click on 'File' > 'Setup' then 'Settings'

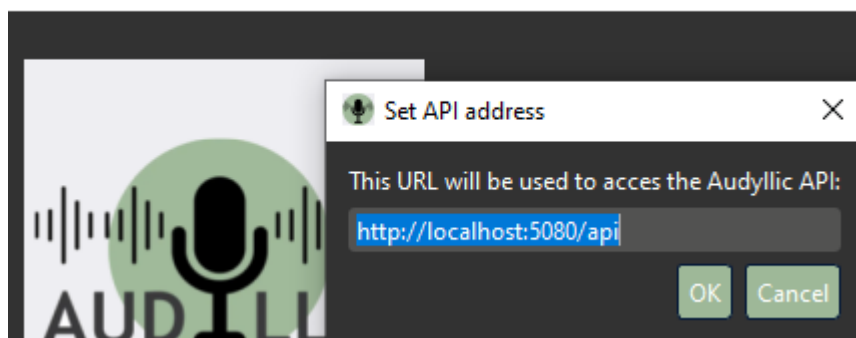


Browse to the location where you extracted the FFMPEG files to, open the 'bin' folder and locate ffmpeg.exe, then select 'OK'.

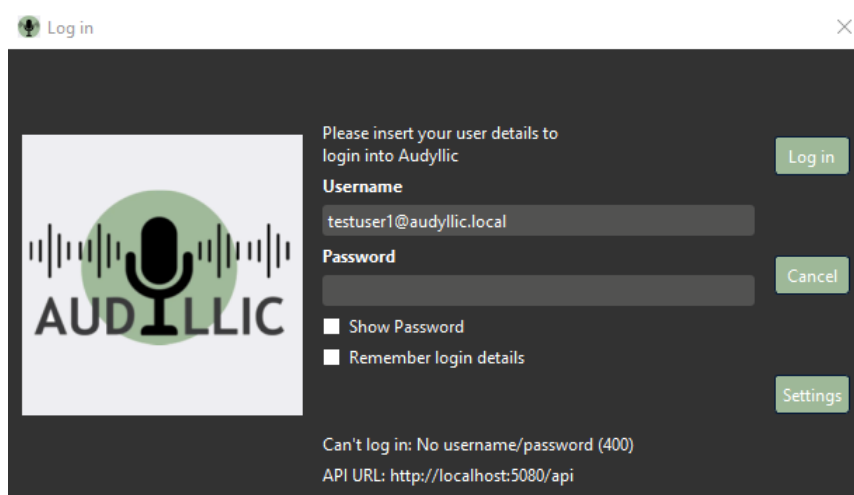


7. Click on the 'Settings' button, (If already logged in, you will have to log out, close and reopen the application) and if required, change the API address URL, for the cloud version, the URL should be left at the default which is <https://portal.audyllic.com/api> For the local version on the same PC it should be <http://localhost:5080/api>, or for another private address within the network, for example <http://192.168.3.22:5080/api> if the Audyllic stand alone on-premises version was installed on a PC or server with a local address of 192.168.3.22. Then click on 'OK'.

 Log in

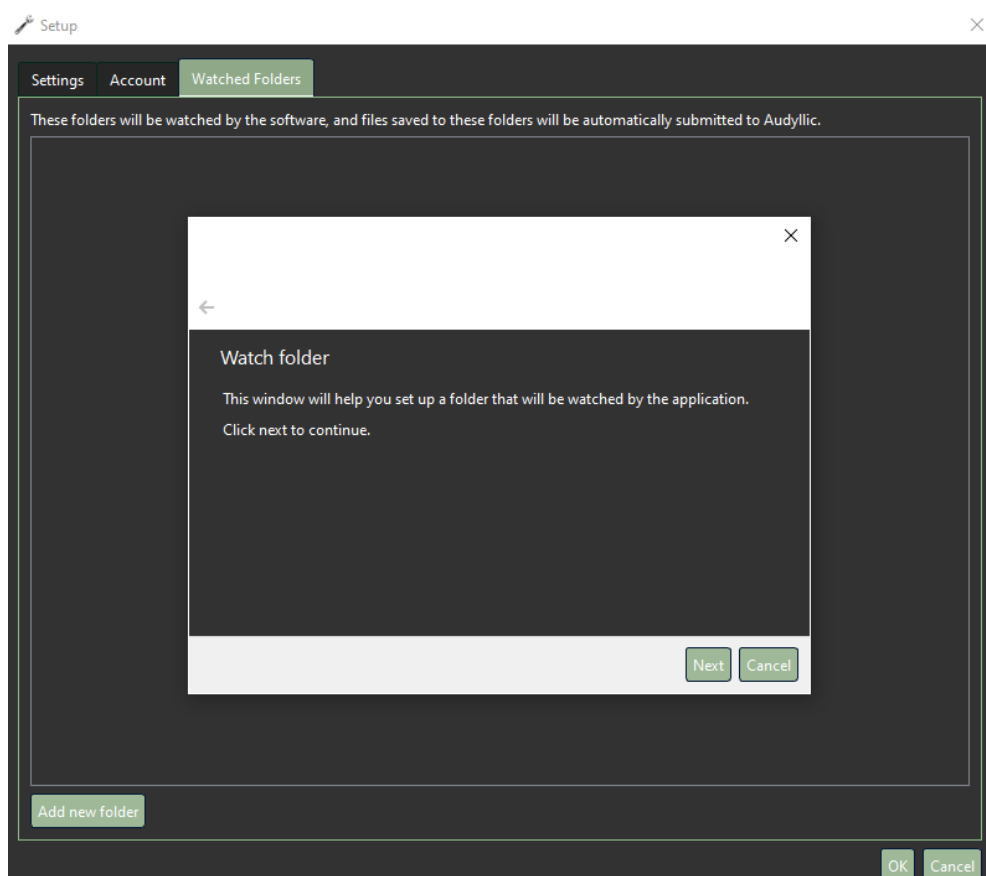


- 8.

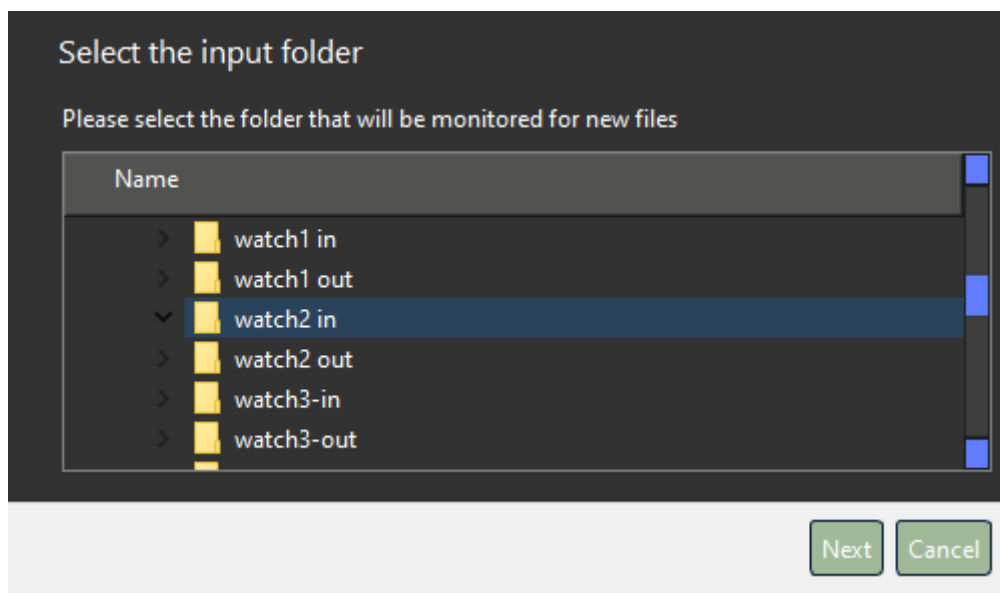


Enter the Username and Password of the local or Cloud Audyllic account you wish to use. (local or Cloud, as appropriate), Then click on 'Log in'.

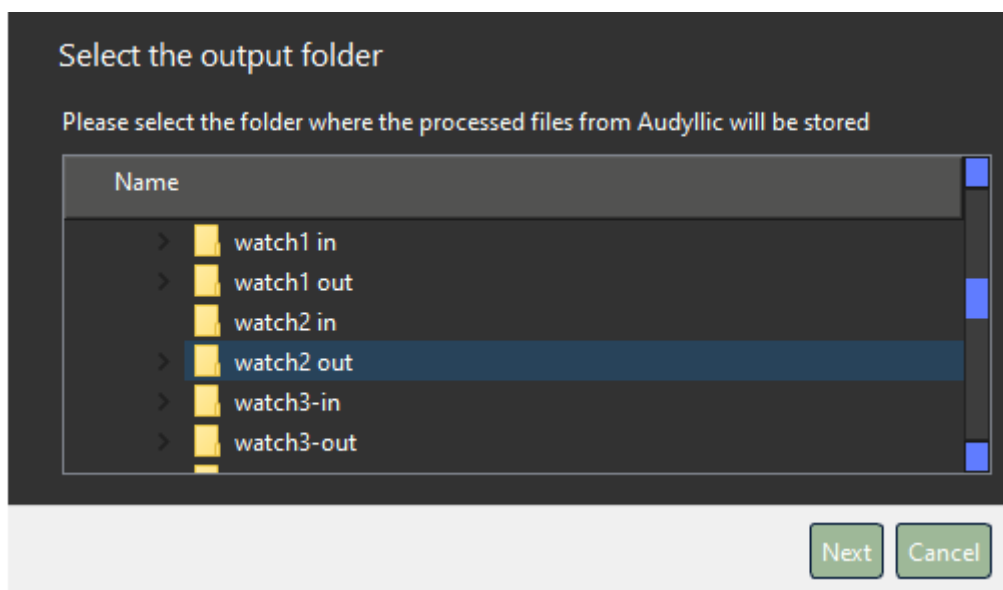
9. Again, click on 'File' > 'Setup'. Follow the prompts to set up the folders you want watched and the folders to save processed files to. Click on 'Add new folder, or if you are upgrading from an earlier version, you may go straight to the 'Watched Folders' tab.



Click 'Next', then select the input folder you want to watch.

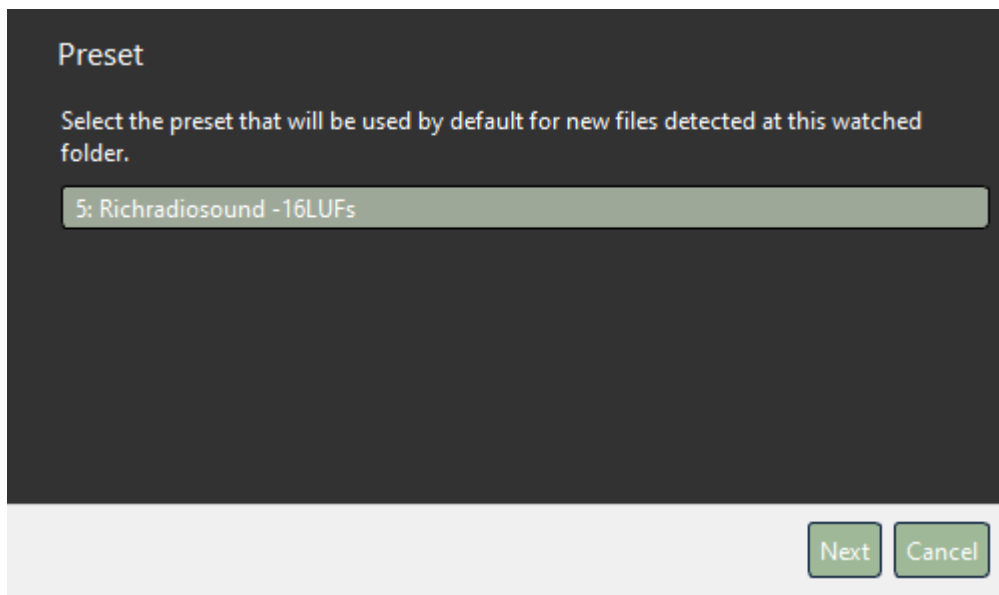


Click on 'Next', then select the output folder to place processed files.

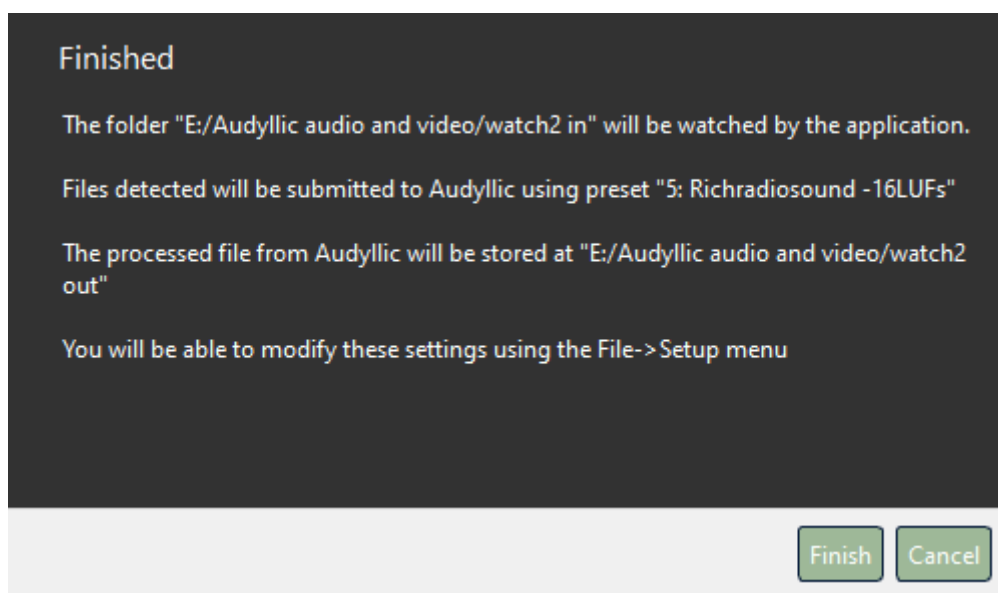


Choose the Audyllic Optimod preset to be used for watched files.

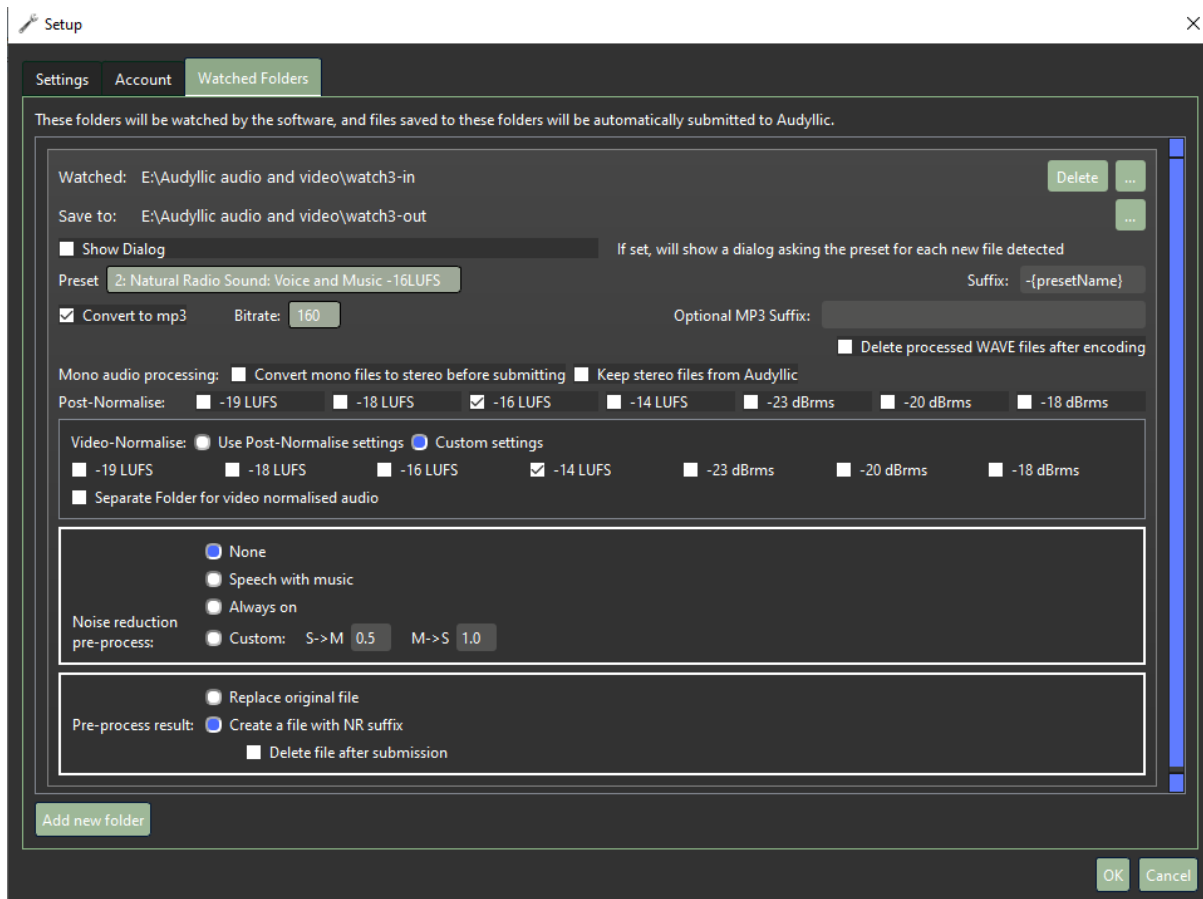
(Later you can set up different watched folders using another preset.)



Clicking on 'Next' will bring you to the following popup:



Clicking on 'Finish' will bring you to the setup window, where you can select various file settings. (This can be accessed later from the 'Settings' tab).



### Watched folder window

The drop down 'Preset' box allows you to select the required audio processing preset you want applied to all files in the watched folder.

By default, the output WAV file has the 'presetName' added to the filename, you can change this by editing the first 'Suffix:' box (in line with the 'Preset' field). If, for example you wanted to add the suffix '- output' to the file you would edit the value in the box. To add a suffix of the name of the actual preset used, the option should be '-{presetName}'. The two curly brackets '{}' recall the variable 'presetname', they are not required for a specific text such as 'output'.

Ticking the 'Convert to MP3' option will convert and add an additional MP3 format file to the selected output folder as well as the standard WAV file. Here, you can also set the MP3 bitrate as desired, deselect the tick box if an MP3 copy is not required. As before, there is an option to add an additional suffix to the MP3 file only, as it will already contain the suffix added to the WAV file, it can be left blank if not required.

Ticking the 'Delete processed WAVE files after recording' will leave only the MP3 file in the output folder, unticking will leave both processed output MP3 and WAV files.

The 'Mono audio processing' options determine what to do with a mono input file, either converts it to dual mono but in a stereo format (both L and R channels are identical) It is submitted to the Optimod as a stereo file, as there are subtle differences in how a file is handled, and it is often preferable to process all files as stereo. The 'Keep stereo files from Audyllic' option determines whether the output file is converted back to mono or left as stereo. There is actually a good reason to leave them as 'Stereo' or 'Dual Mono-Stereo' and it has to do

with the ITU-R BS1770 standard which assumes mono files are only played on one speaker, while stereo are played on two. In reality, most devices play back mono and stereo files on two speakers and don't do anything to adjust the loudness, and the majority of podcast audio appears to be stereo or dual channel mono. In the app, you can choose whether to apply overall file loudness normalisation at -16LUF or -19LUF (for most cases, we recommend -16 LUF)

#### Post-Normalise options:

The Loudness controller in the Optimod PCn1600 (as utilized by Audyllic) provides a ceiling for the BS.1770 loudness when measured using a relatively short-term rolling measurement. The controller has a 10 second attack time (to prevent unnatural loudness ducking) and 3 second release time (to prevent loudness from being below the target for too long a time). The Optimod PCn1600 loudness controllers' dynamic responses were designed to sound as good as possible, given the limitations of the BS.1770 algorithm, and it processes a file sequentially (the same way as it would if the material were being played out in real time) and does not analyze the loudness of the entire file, just rolling loudness within about a 10-second window.

Because many users require an exact loudness for a file, it may be necessary to do a post-processing step to statically adjust the file gain once the entire file is recorded. This can be done by ticking one of the 'Post-Normalise' option boxes. There is a choice of the most commonly required BS1770 LUF options as well as RMS options that may suit other platform's requirements.

Should you require your video audio to be set to a different level to the audio only (for example - 14LUFS for YouTube, -16LUFS for the audio only podcast) In the 'Video-Normalise' option, check the 'Custom Settings' box and choose the loudness level that you require. If this box is not checked, Video loudness will be the same as audio which was set in the 'Post-Normalise' setting above. There is also an check box option to have the video saved to a separate folder within the main 'Save to' folder selected..

#### Noise reduction pre-process options.

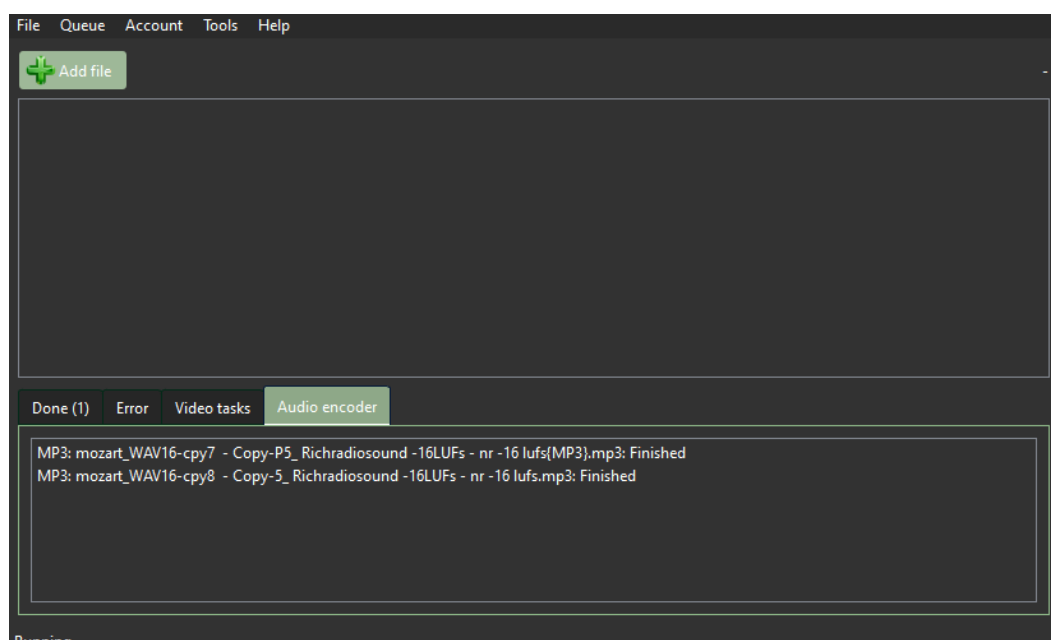
The noise reduction pre-processing function can be used to clean up audio content that suffers from excessive background noise and room echo. There are three settings, 'None' turns off this function, 'Speech with music' will distinguish between music and speech and apply the algorithm only to the speech portion, otherwise it would tend to treat much music as unwanted noise. The 'Always on' option will apply the algorithm to the whole file, regardless of its content. The 'Custom' option implements the speech /music detection algorithm, but allows adjustment of the time constants between speech to music (S>M) and music to speech (M>S) to be adjusted, the standard for the 'speech with music' setting is speech to music: 0.5 seconds, music to speech: 2 seconds.

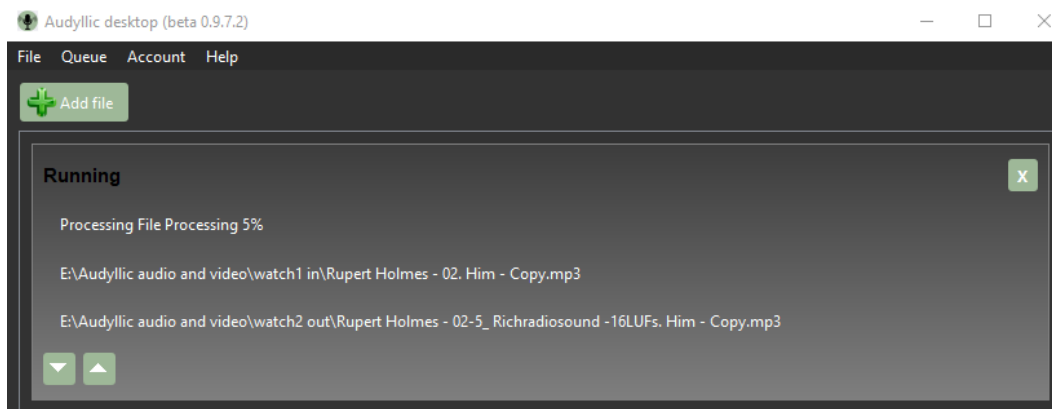
#### Multiple watched folder option with different presets and settings.

If you want a different preset or other settings applied to certain files, click on the 'Add new folder' button at the bottom left, and set up another input and output folder. The input folder should be unique for each preset, but the output folder can be common to other watched folders.



10. The Audyllic ‘Smart Watch Hot folder app will now automatically upload any new files that appear in the monitored folder. You can also manually add a file using the ‘Add file’ button. There is a dialog window that shows the status of the file processing and any finished files.





11. There is *no need* to log in to your Audyllic portal web account, but if you do, you will see your files progress. If you have notifications enabled in Windows, you will see a notification.

To start a new job, choose a file and select "Upload Job":

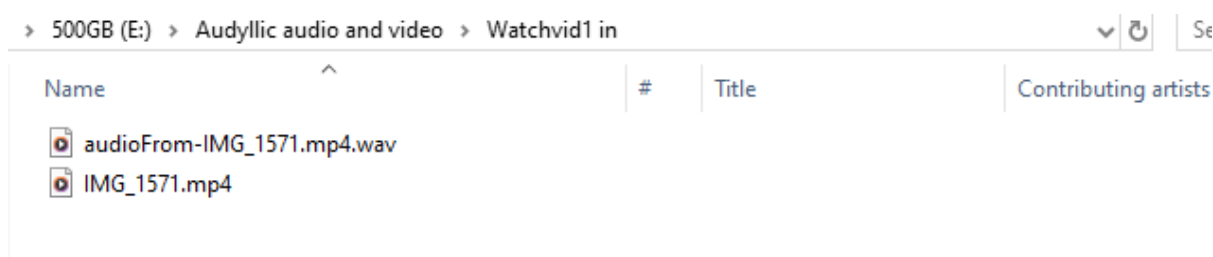
File:  No file selected.



Preset:

Your jobs

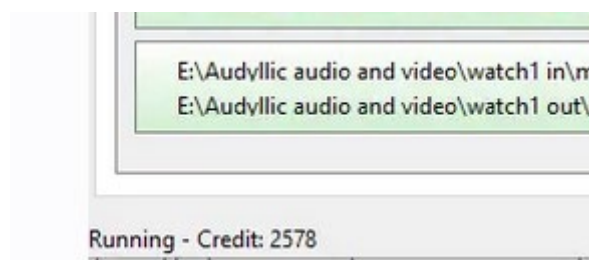
#	Date	Name	Duration	Status
1552	14. Mar 2024	audioFrom-IMG_1571.mp4.wav Natural Radio Sound: Voice and Music -16LUFs	6:43	Processing <div><div></div></div>

12. If the file is a video format file, as well as your video file with processed audio, you will also get a WAV file of both pre and post processed audio – useful for an audio only version of a video podcast for example!



500GB (E:) > Audyllic audio and video > Watchvid1 out			▼ ↻	Search
Name		#	Title	
 audioFrom-IMG_1571-2_ Natural Radio Sound_ Voice and Music -16LUFS.mp4.wav				
 IMG_1571 - 2_ Natural Radio Sound_ Voice and Music -16LUFS 155355.mp4				

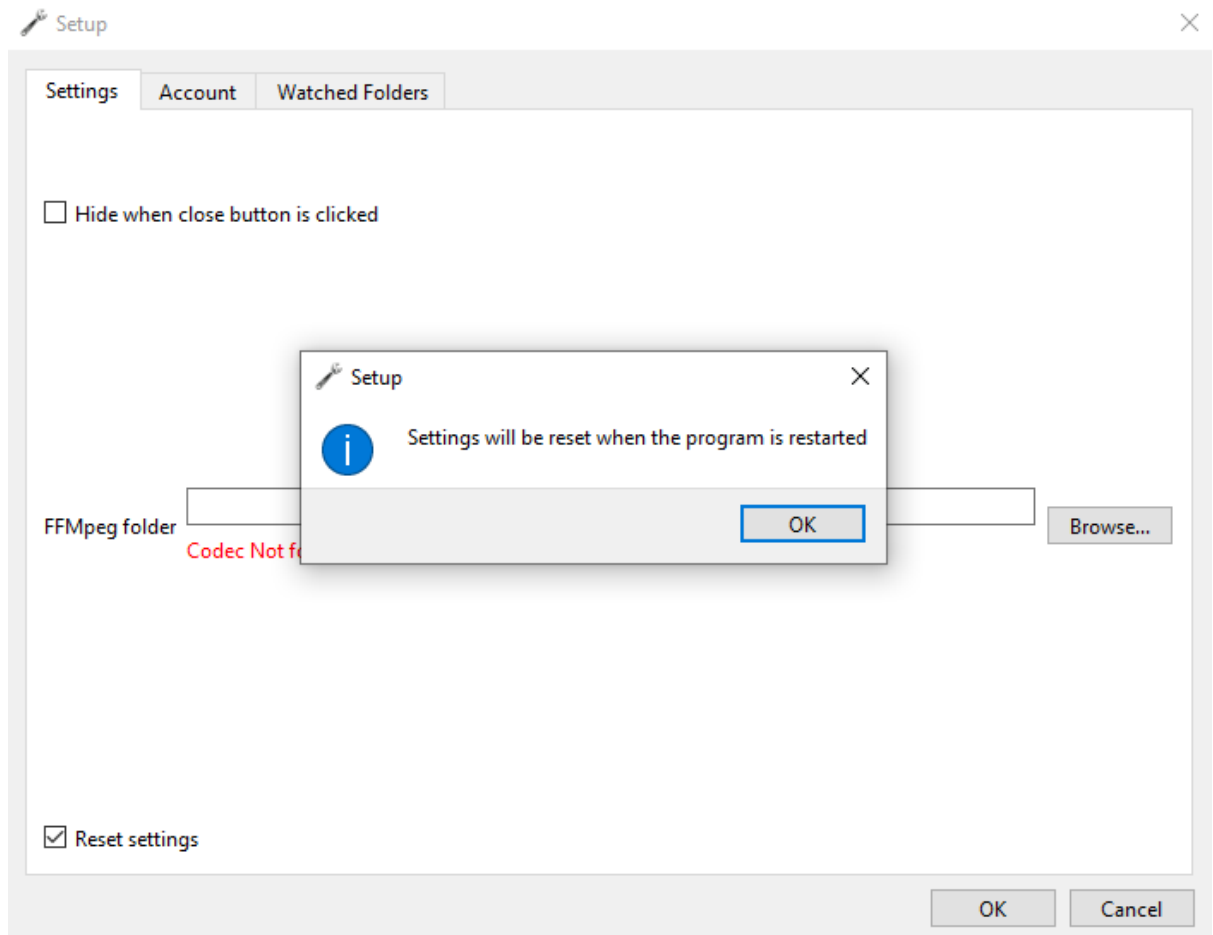
If there is credit in your account, you will see the amount available in minutes in the bottom left corner of the app after processing. If there is no credit available, the Watch App will not submit files for processing to the Audyllic server. (This will not display, if logged into a locally hosted version of the Audyllic service as credit is not relevant)



## Maintenance and settings - Proceed with caution!

The following are details of how to reset or uninstall the Watch folder program

13. If you want to reset all settings, go to 'File' > 'Settings', and tick the 'Reset settings' box, then click 'OK'. **Caution.** You will have to re-enter the watched folders, and any files still there may be resubmitted to the Audyllic server.



14. Restart the program, re- enter your log in details (if resetting, or updating or changing from cloud to local stand-alone version).
15. You can delete the 'settings.xml' file by going to the "Audylic desktop" folder inside your Appdata/local folder. i.e. C:\Users\<username>\AppData\Local\Audylic desktop - <username>. is the name of the PC user. After this is done, shut down and restart the program.
16. To uninstall, just delete the Watch folder that you saved in step 1, and delete the 'settings.xml' file as in step 15.